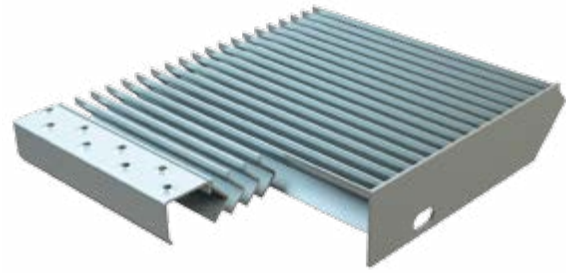


ANTIVERTIGO SYSTEM

The no-panic ANTIVERTIGO GRATING is a patented exclusive system by NUOVA DEFIM ORSOGRIL. The special shaped profiles provide total screening down, while keeping the typical airflow grating characteristics. The step designed using this grating type complies with current anti-skid norms; ANTIVERTIGO landings and walkways grating are also available upon request. For landings composition, the system foresees a starting panel provided with "nosing" and a variable number of interlocked panels to reach the desired length. The panels are joined together by a "dovetail" system between the frames. This solution grants the visual continuity between adjacent panels, hiding the junction points.



TECHNICAL DETAILS

Material

> S235JR UNI EN 10025 Steel

Coating

> Hot-dip galvanizing according to UNI EN ISO 1461

Weight

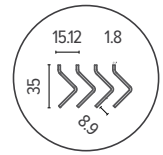
> 18.3 kg/each, galvanized

Capacity load (kg)

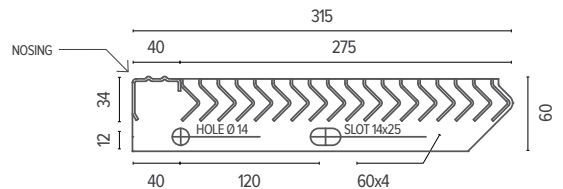
> Stair tread load on maximum net span of 1200 mm

PRODUCT SPECIFICATIONS

ANTIVERTIGO ORSOGRIL Stair tread for bolting Mesh mm: 15. Bearing bar mm: special V profile. Round cross bar mm: Ø 6. Dimensions mm: 1200x315
Grating panel provided with a special front profile called "nosing" and two perforated side plates for bolting it to the steel stair supports. Weight kg/each: 17.8 galvanized. Material: S235JR UNI EN 10025 Steel.
Finish: hot-dip galvanizing according to UNI EN ISO 1461



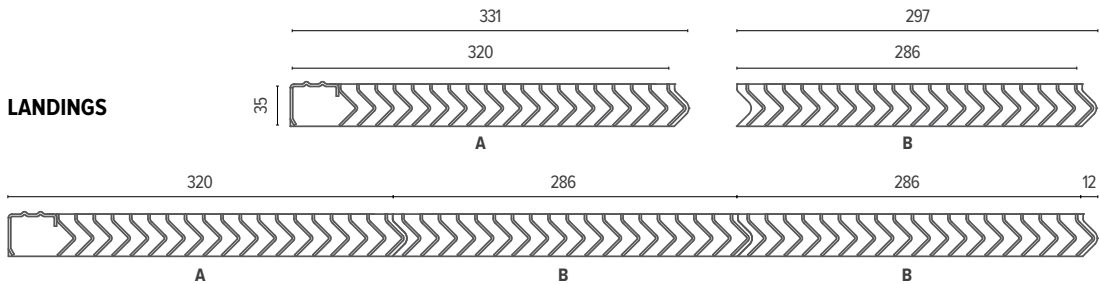
"NO PANIC" STEP



APPLICATIONS

- > Light gratings
- > Floors
- > Walkways
- > Stair treads
- > Drainage covers
- > Mezzanines

LANDINGS



LANDINGS

For landings composition, the system foresees a starting panel provided with "nosing" and a variable number of interlocked panels to reach the desired length. The panels are joined together by a "dovetail" system between the frames. This solution grants the visual continuity between adjacent panels, hiding the junction points.

A_ Starting panel with "nosing"

Dimensions Width (W): 1200 mm
Depth (D): 320 mm
Weight kg/each. 16.8 (self-colour)
kg/each. 17.8 (galvanized)

B_ Standard panel

Dimensions Width (W): 1200 mm
Depth (D): 286 mm
Weight kg/each. 15.2 (self-colour)
kg/each. 16.2 (galvanized)

